

# USER & INSTALLATION MANUAL OF SUBLIMATION COLOUR PROFILES ON THE EPSON ECOTANK



[brildor.com](http://brildor.com)

# INDEX

## WINDOWS

PROFILE UTILISATION | PHOTOSHOP ..... 3

PROFILE UTILISATION | OTHER PROGRAMS ..... 5

## MAC

PROFILE UTILISATION | OSX ..... 8

## REGISTER

PURCHASE & REGISTRATION ..... 13

# WINDOWS

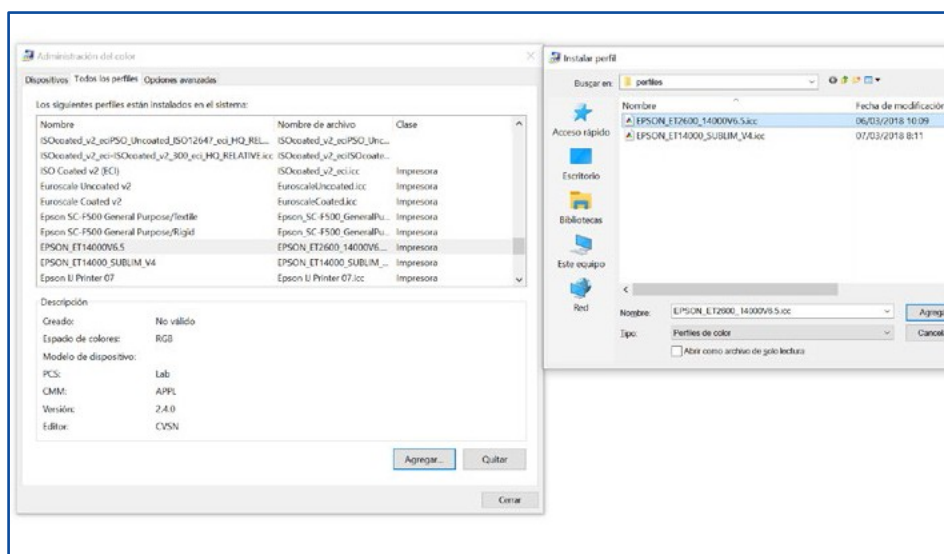
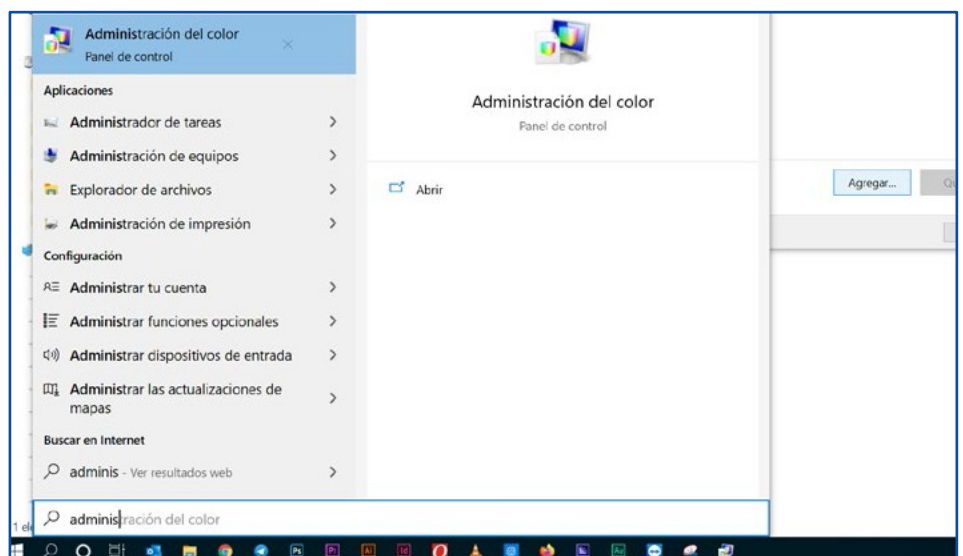
Our colour profile is developed for general use and works well when using **Adobe Photoshop** as a colour manager. For sublimation with other types of software such as Adobe Illustrator or Silhouette Studio, we recommend the use of the **Printfab** virtual printer driver.

Remember that factors such as paper type, product, and even time and temperature can influence colour in sublimation.

## INSTALLATION AND USE OF THE COLOUR PROFILE WITH ADOBE PHOTOSHOP

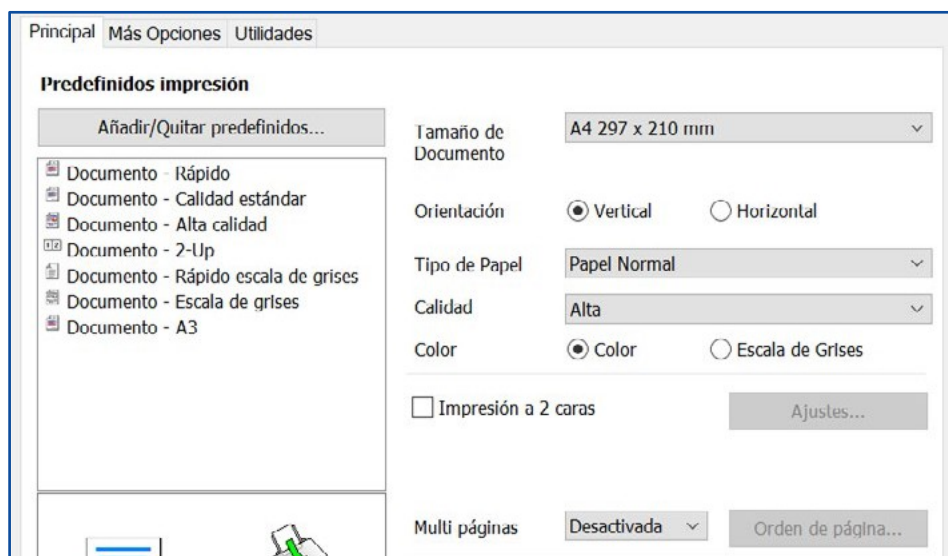
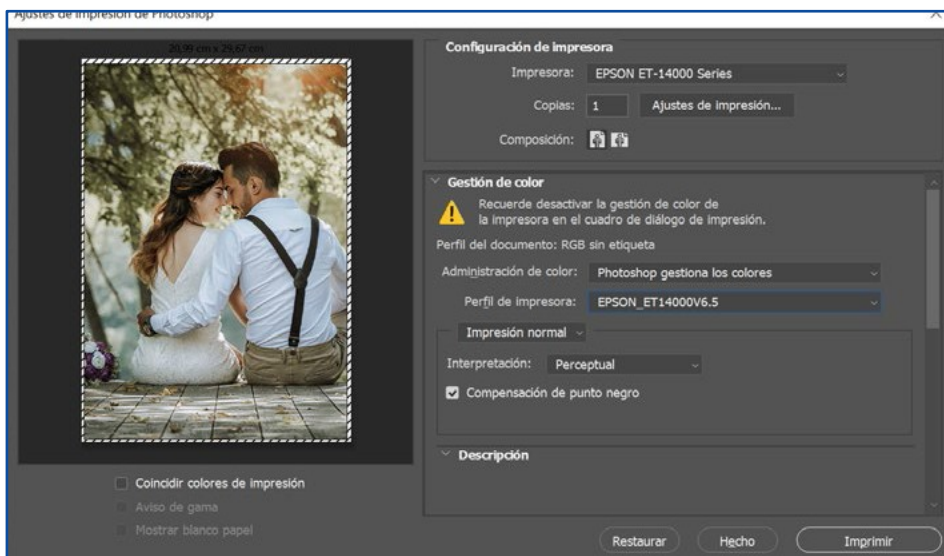
1. Install the printer drivers.
2. After installation, download the colour profile [here](#) or at: <https://bit.ly/printfabBrildor>

3. Install the downloaded profile by clicking on the Windows button. Type **colour management** and tap the icon to open it.



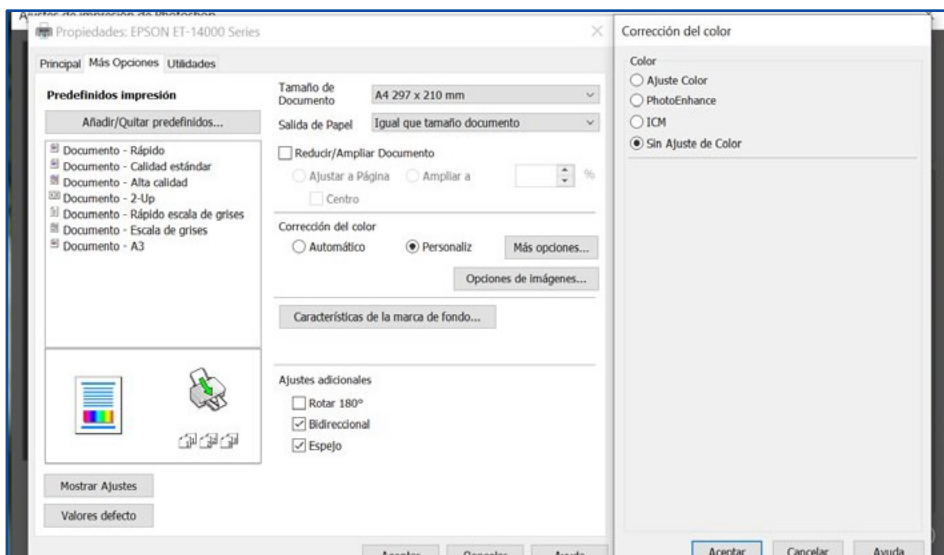
4. Within colour management, go to the All Profiles tab, press Add, and select the profile.

5. Now, when you want to print from Photoshop, you must pick **Photoshop manages colours**. In the Printer profile drop-down menu, choose **EPSON\_ET14000V6.5** Rendering intent must be perceptual.



6. In print settings, in the **MAIN** tab, select the Paper type: **PLAIN PAPER**. Set quality on **HIGH**.

7. Under Colour Correction in the **MORE OPTIONS** tab, click on Advanced and select **NO COLOUR ADJUSTMENT**. Remember to activate mirror image in Additional Settings. Press the OK button, and you may now proceed to print your image/design.



It is important that you work in RGB colour mode (Adobe RGB or sRGB) since printer drivers are designed to use this colour mode and the profile will work better for you. If you need to make some modifications, you can use Photoshop adjustment layers.

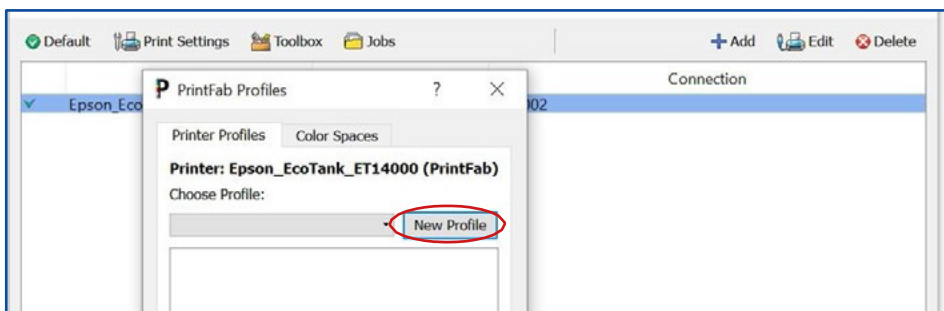
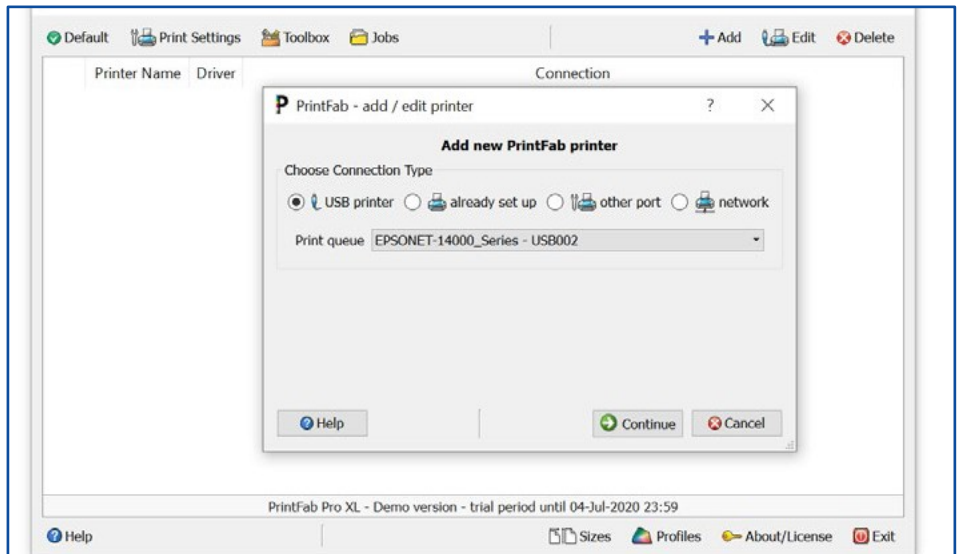
# INSTALLATION AND USE OF THE COLOUR PROFILE WITH PRINTFAB

If you need to use your sublimation printer from another software, or if you need more printing options, we recommend using the virtual printer driver PRINTFAB. You may find it on our online store.

Printfab has a 30-day trial version, so you can use it without limitations for 30 days before purchasing it.

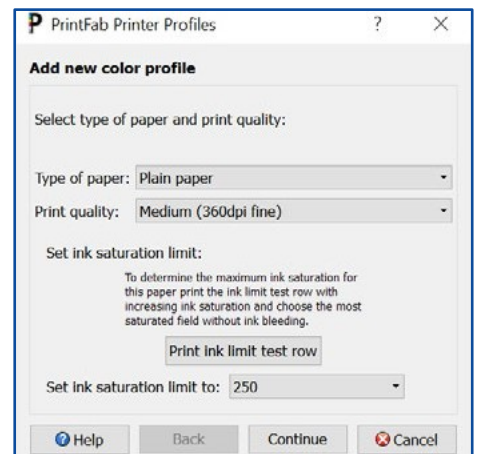
1. Install the printer drivers.
2. After installation, download the colour profile [here](#) or at: <https://bit.ly/printfabBrildor>
3. Download PRINTAB for Windows [here](#) or go to <https://bit.ly/printfabBrildor> and install it.

4. Once installed, open Printfab and click on Add to add your printer. With the printer ON and connected to your PC, choose the Connection Type and select it in the drop-down menu. Press Continue and make sure that the model matches your printer.



5. Now that the printer is selected click on the **PROFILES** button below. Press on **New profile** to start creating the profile.

6. Now choose the Type of paper: **Plain paper**  
For Print Quality, select: **Medium (360dpi fine)**



7. Fill in every field. That is particularly interesting in case you use different papers or inks. Click on Continue and hit OK to finish.

**Enter fields for new color profile**

Please enter the following fields to identify your unique profile:

New profile name:

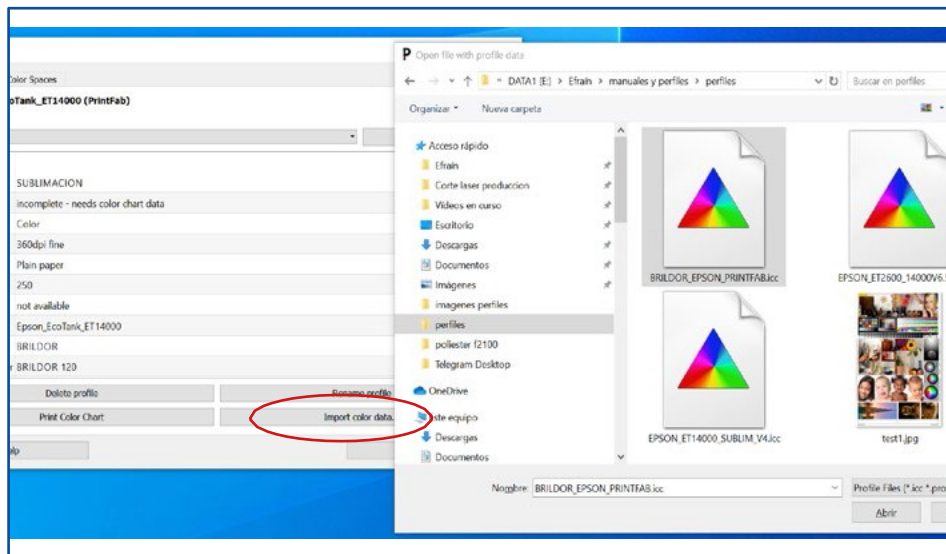
User name:

Paper manufacturer:

Paper product name:

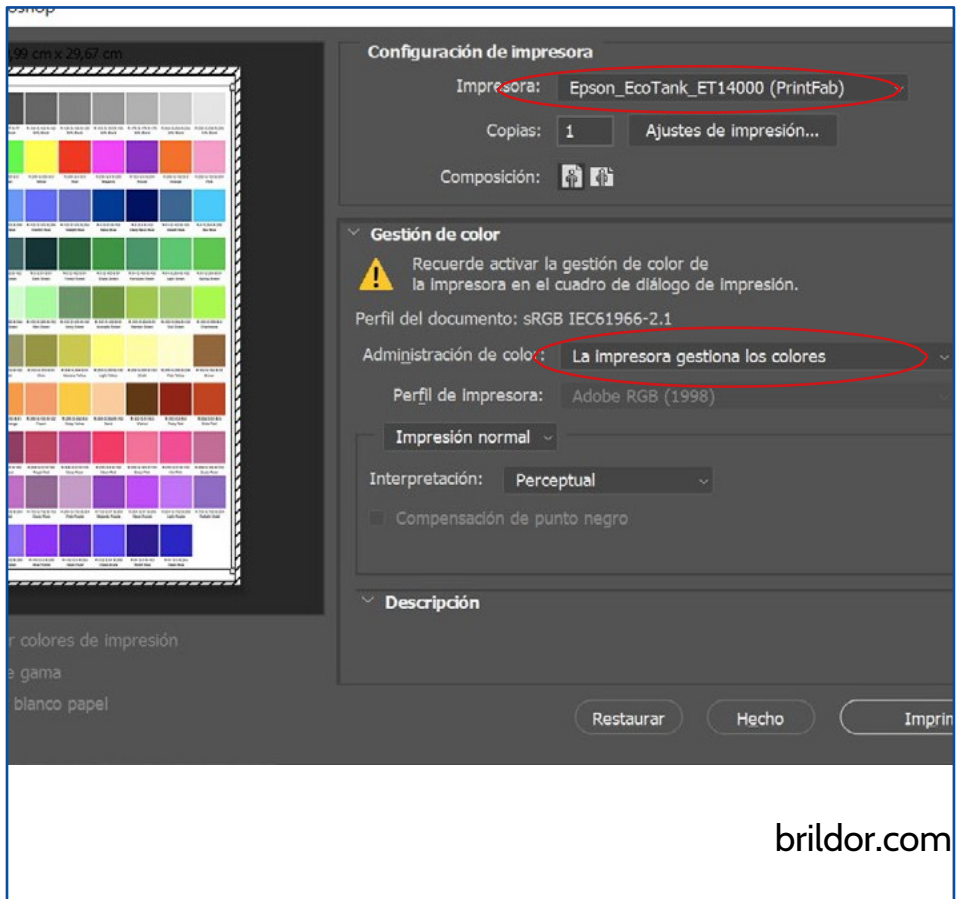
Ink manufacturer:

Ink product name:

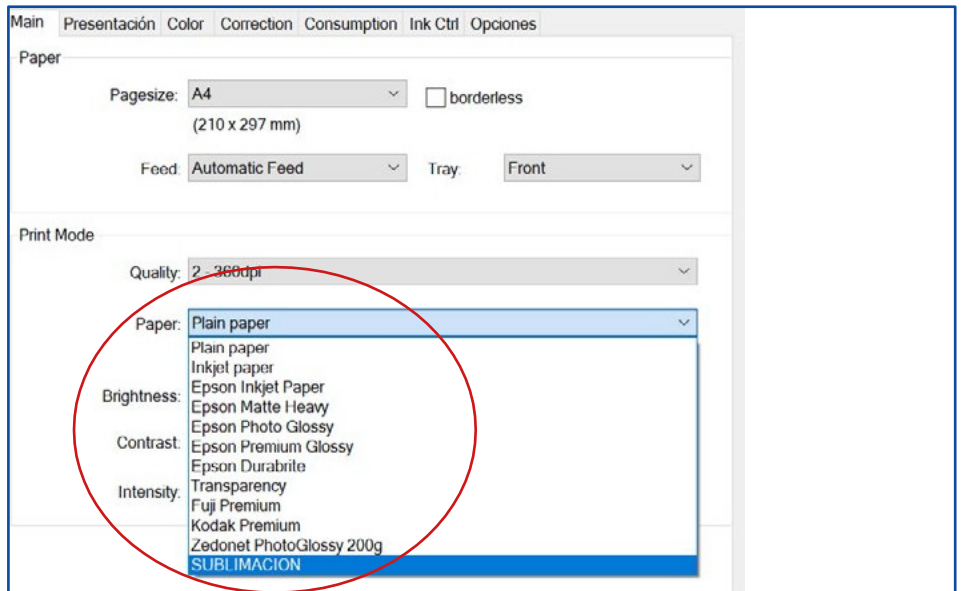


8. Now click on “Import color data” and select the colour profile you have previously downloaded to complete the setup.

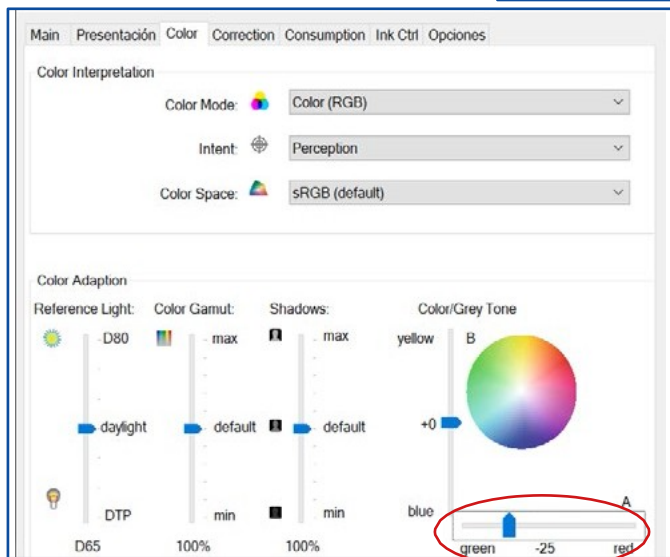
9. You can now print from any software, always selecting the option **Printer manages colours** so Printfab is the one controlling them. You must select the printer printfab.



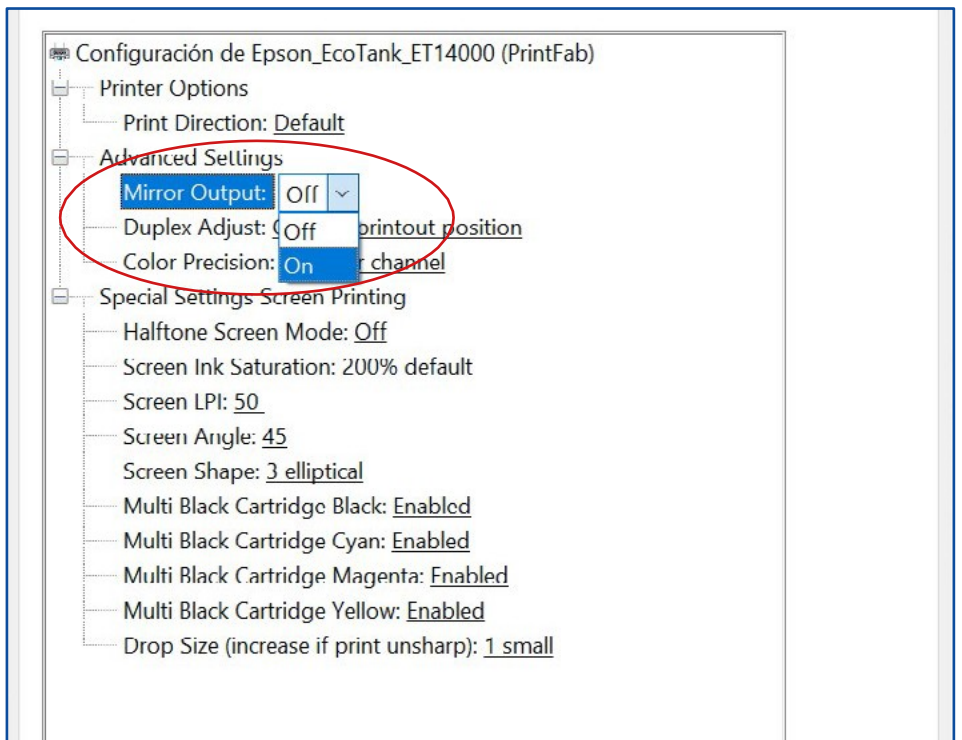
10. In the print settings, you must select the quality you prefer. However, under “paper”, you must choose the preset with the colour profile that you created earlier. In our case, it is called **SUBLIMACIÓN**.



11. In the Color tab, we will colour correct towards the grey tones. Move the bar to **green** at **-25**.



12. Finally, in the Options tab, you must choose **Mirror Output ON** for the mirror mode to be activated. Confirm and print.

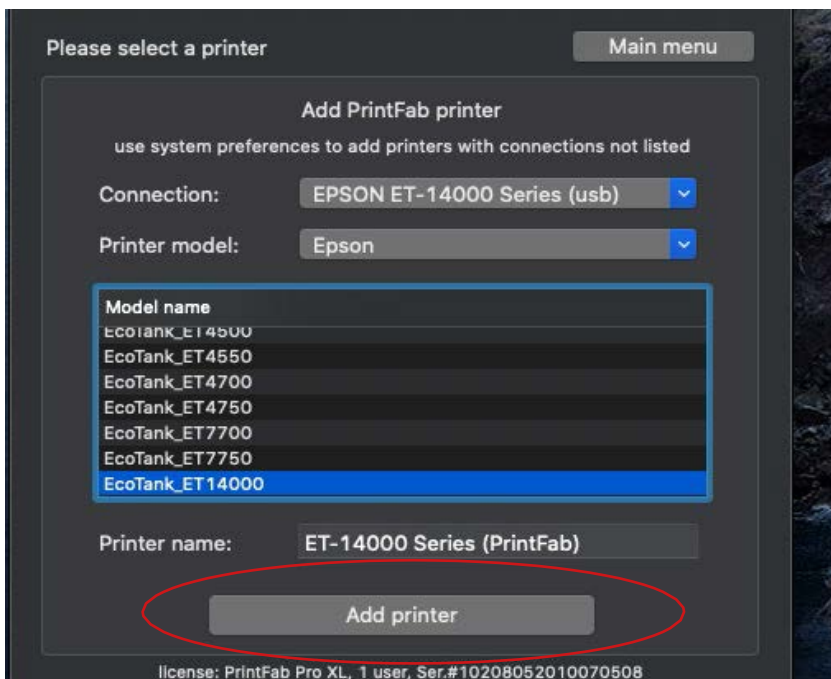
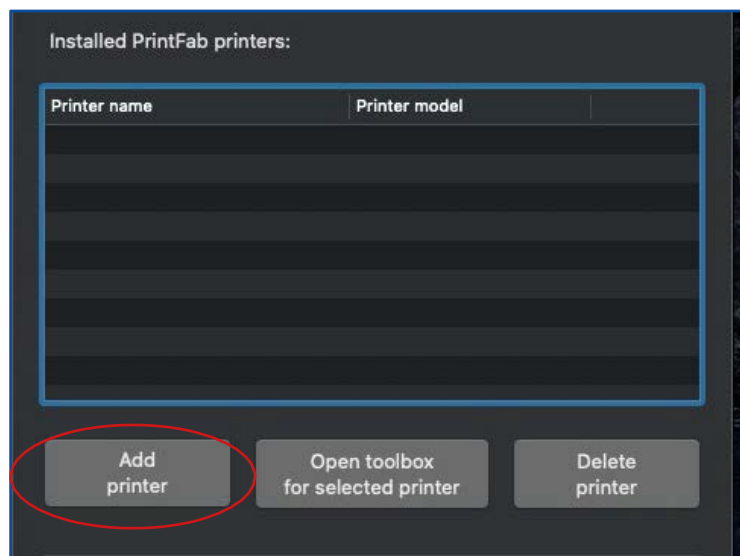


# MAC OSX

Due to the colour engine used by OSX and its colour management through ColorSync, it is necessary to use a virtual printer driver like Printfab for correct colour management. The advantage is its ability to correct colours from the driver and that you can use it to print from any software.

## INSTALLATION AND USE OF THE COLOUR PROFILE WITH MAC

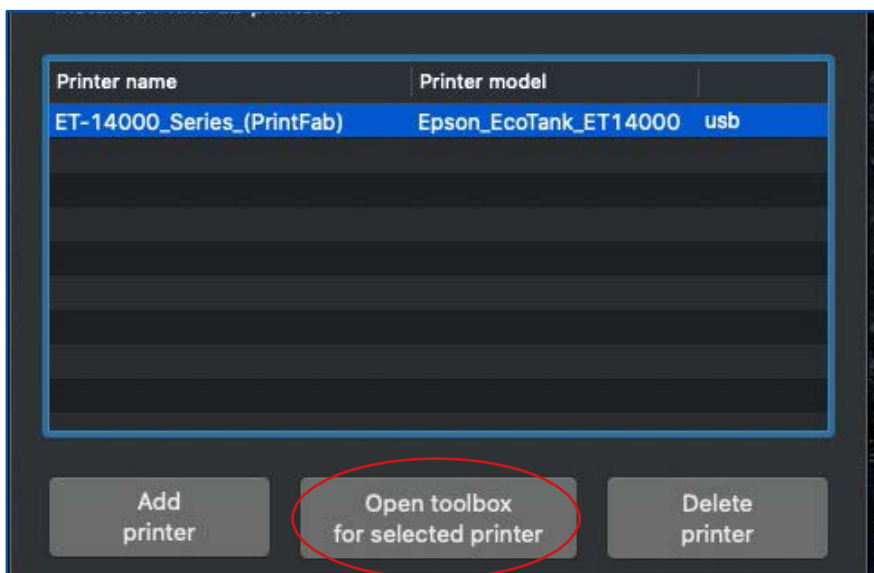
1. Install the printer drivers.
2. After installation, download the colour profile [here](#) or at: <https://bit.ly/printfabBrildor>
3. Download PrintFab for OSX [here](#) or at <https://bit.ly/printfabBrildor>
4. Install PrintFab.
5. Open **Printfab Toolbox** and press **Add printer**.



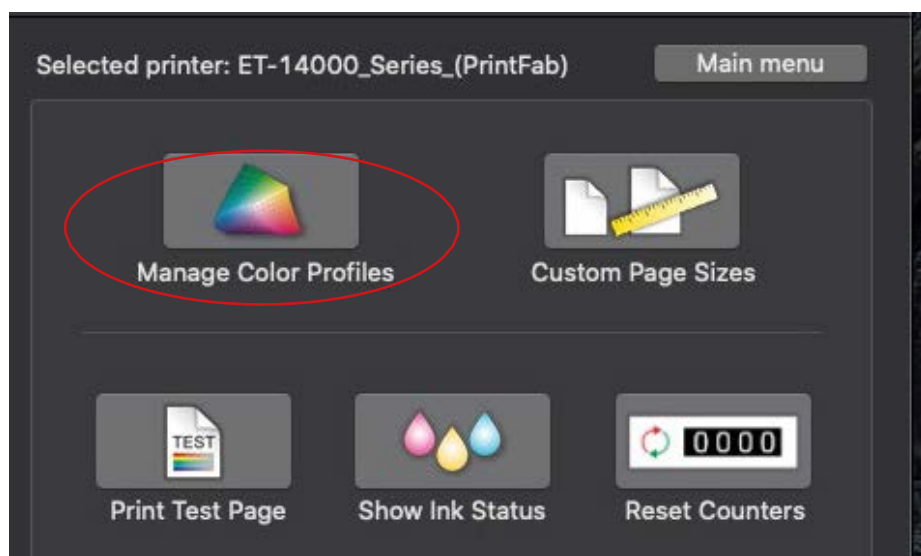
6. With the printer connected to the MAC choose your printer under **Connection and Printer model** and click on **Add Printer**.



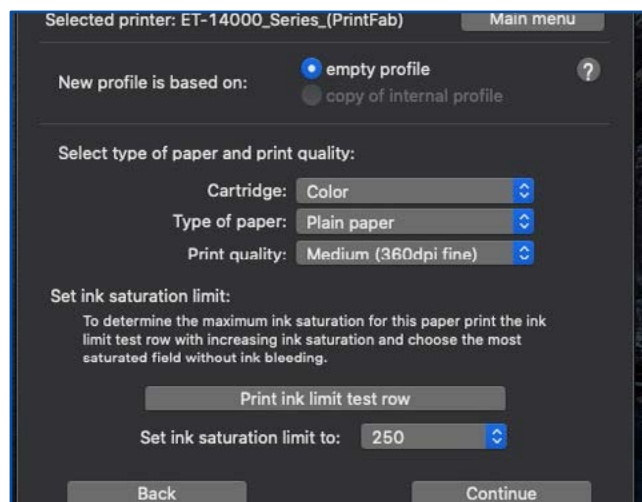
7. Select your printer and press on **Open toolbox for selected printer**



8. Click on **Manage Color Profiles**



9. Press on **New profile**



10. Select the Type of paper: **Plain paper**. Under Print quality choose: **Medium (360dpi fine)** and hit Continue

11. Fill in every field. That is particularly interesting in case you use different papers or inks.  
Press **Continue**.

Selected printer: ET-14000\_Series\_(PrintFab) Main menu

Print color chart for profile creation:  
Please enter the following fields to identify your unique profile

new profile name: SUBLIMACION  
user name: Brildor  
paper manufacturer: BRILDOR 120  
paper product name: BRILDOR 120  
ink manufacturer: EPSON  
ink product name: EPSON

Back Continue

license: PrintFab Pro XL, 1 user, Ser.#10208052010070508

12. Click on **Create profile**.

Profile specification (please check):

new profile name: SUBLIMACION  
user name: Brildor  
paper manufacturer: BRILDOR 120  
paper product name: BRILDOR 120  
ink manufacturer: EPSON  
ink product name: EPSON  
Ink saturation limit: 250  
Cartridge: Color  
Paper class: Plain paper  
Print quality: Medium (360dpi fine)

Note:  
You can reuse the sheet where the the ink limit row was printed for printing a color chart - insert it upside down to print on the blank part.

Back Create profile

13. Now click on **Import color data...**

Selected printer: ET-14000\_Series\_(PrintFab) Main menu

**Color Profile Management:**

Manage printer profiles Manage color spaces

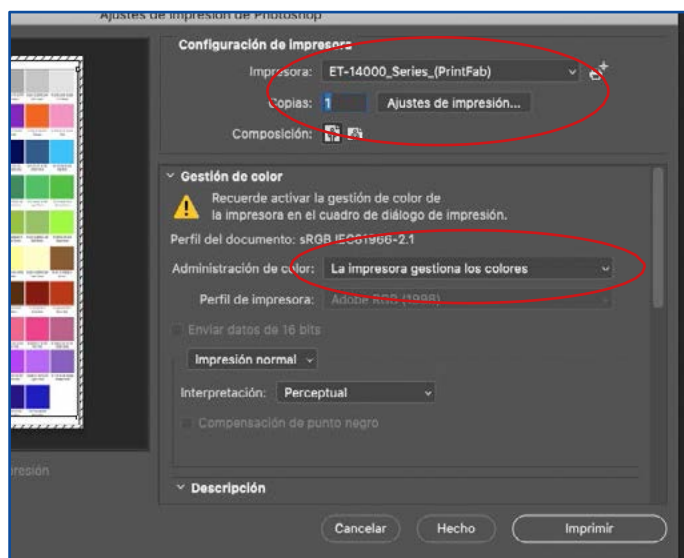
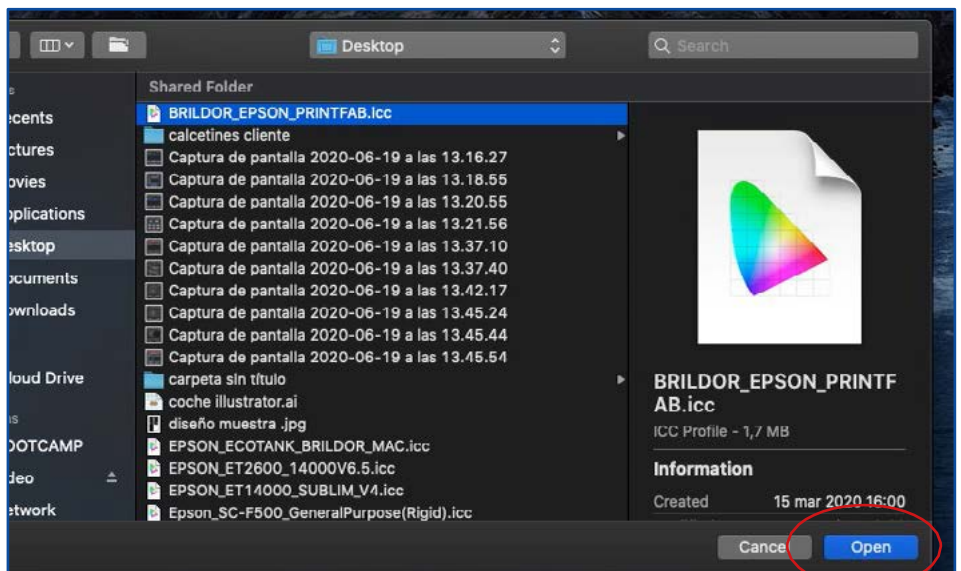
Choose profile: SUBLIMACION New profile...

profile data	
Cartridge:	Color
Quality:	360dpi fine
Paper class:	Plain paper
Ink limit:	250
Color data:	not available
Driver:	Epson_EcoTank_ET14000
User:	Brildor
Paper manufacturer:	BRILDOR 120

Delete profile Linearize  
Print Color Chart Import color data...

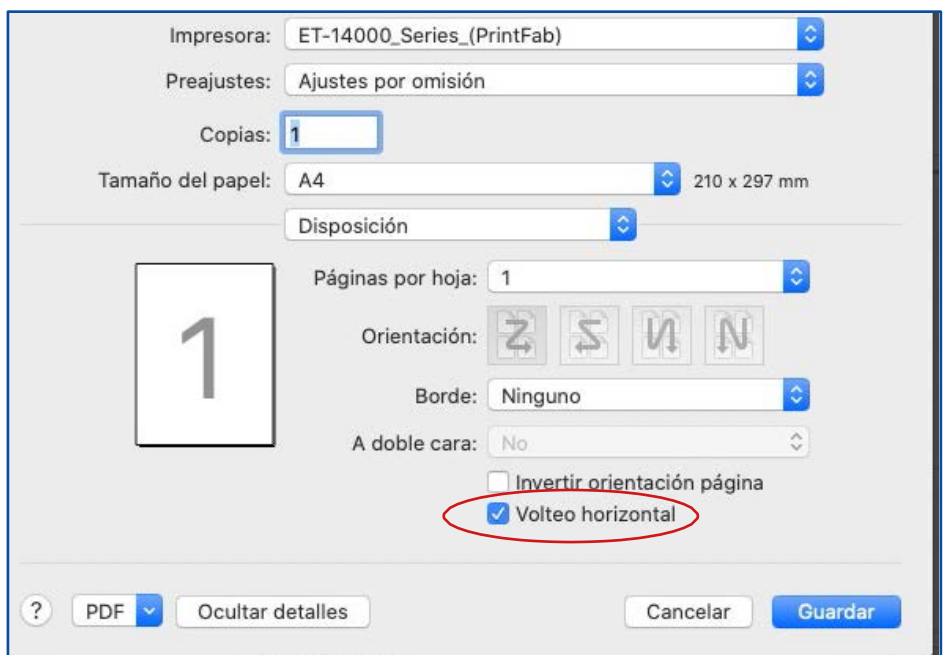
license: PrintFab Pro XL, 1 user, Ser.#10208052010070508

14. ...and select the colour profile you downloaded earlier. Click on **Open** to complete the setup.

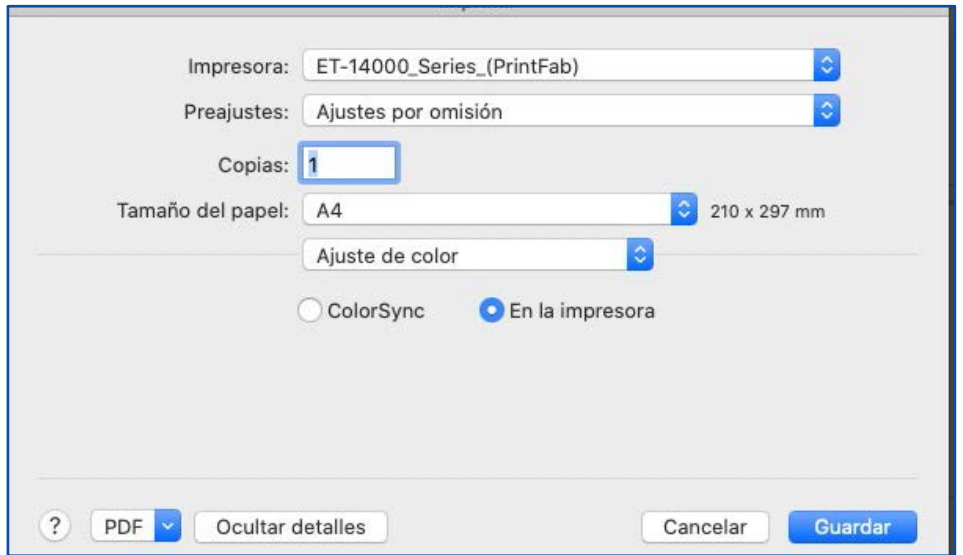


15. In your favourite design software, select Printfab as your printer. In Colour management you must choose **Printer manages colours**. Click on Print settings to correctly set up printing.

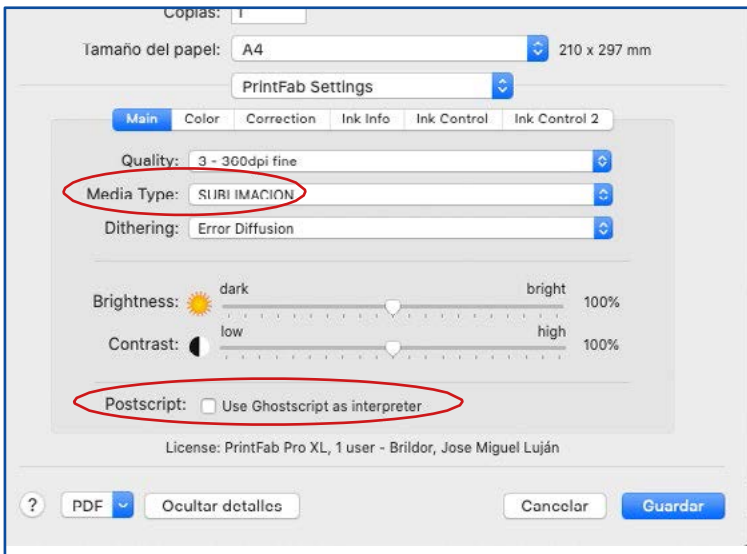
16. Under the **Layout** tab, select **Flip horizontally** for it to print in mirror image.



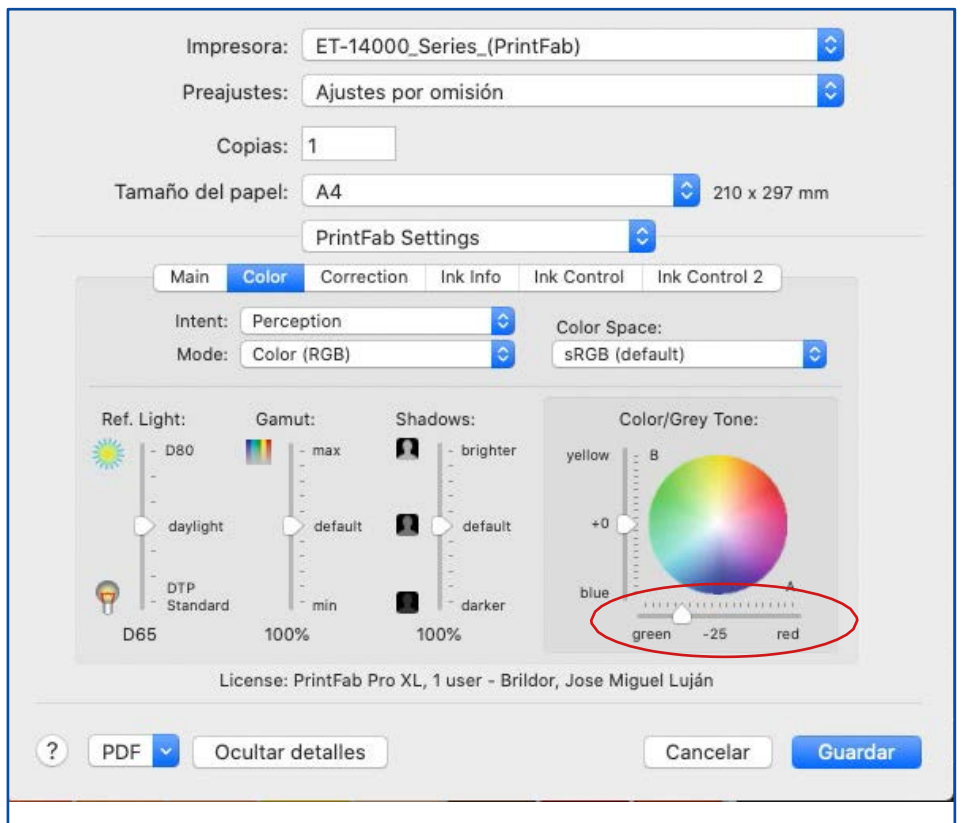
17. Under Colour Matching, choose: **In printer**



18. Under PrintFab Settings and **Media Type**, select the profile you created earlier. Uncheck the **Use Ghostscript as interpreter** option.



19. In the **Color** tab we will color correct towards the grey tones. Move the bar to **green at -25**.



## PRINTFAB REGISTRATION

PrintFab has a **30-day trial** to enjoy the program. After the trial month has passed, if you attempt to print, a watermark will appear at a random location on the sheet.

To purchase a license, you must enter [here](#) or go to <https://bit.ly/printfabBrildor> and add it to your cart.

On the **delivery note**, you will receive a serial number.

	Referencia	Nombre del producto	Unidades		
			Pedidas	Servidas	Pendientes
	037 922	Software Printfab Home L <i>Lote/Serie: 1322-3301-6956-7555</i>	1	1	1

Now you must click [here](#) or go to <https://bit.ly/PrintfabRegister> and fill in every field on the website. Press **Send** after you finish.

### Request PrintFab license key

You can use this form if you have a PrintFab license order code and want to order a personalized PrintFab license key.

Please fill in the PrintFab license order code and the licensee's address data.

We will send the PrintFab license to the email address specified in the form.  
Please allow 3-5 working days processing time between December 24 and January 6.

License order code

**Licensee:**

Company name

First name

Last name

Street

ZIP Code

City

Country

Phone

**Send license key to:**

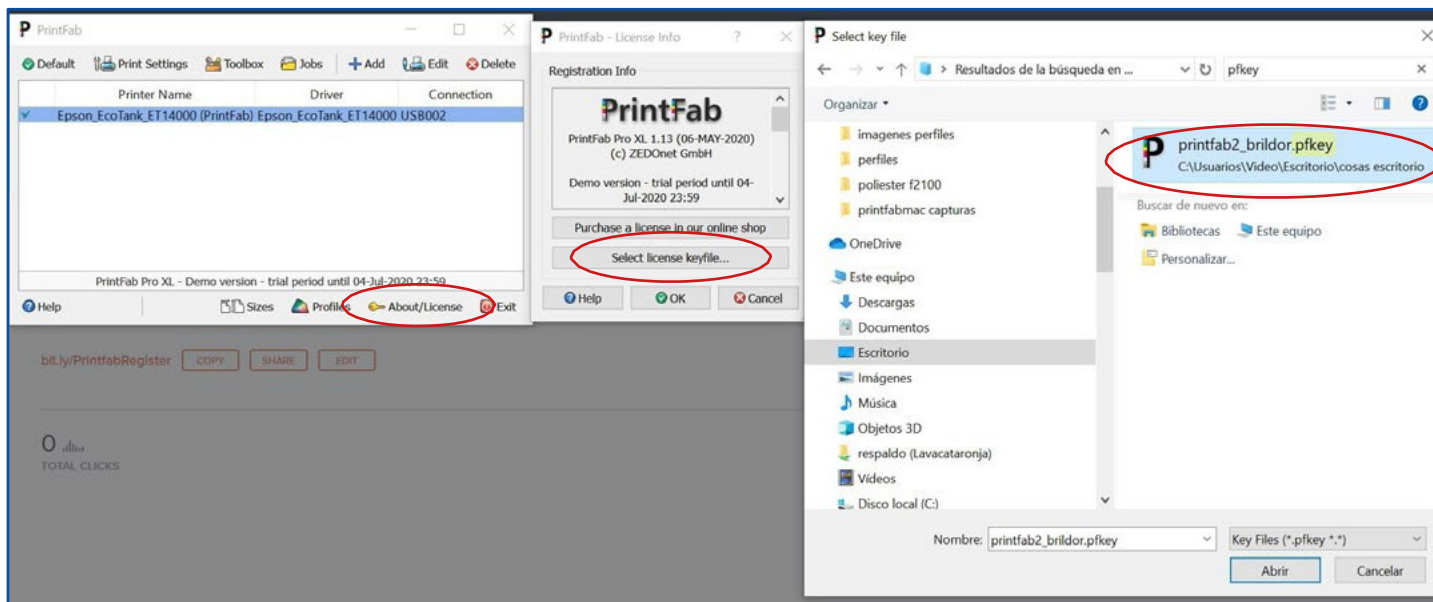
Email address

Confirm email

You will receive by email the licence file that you will have to install.

If you run on **WINDOWS**:

1. Open PrintFab and click on **About/License**.
2. Press on **Select license keyfile...**
3. Choose the file you received by email after asking for the key.



For **MAC**:

1. Save the **license file** that you received by email.
2. **Double click** on it and install it.

